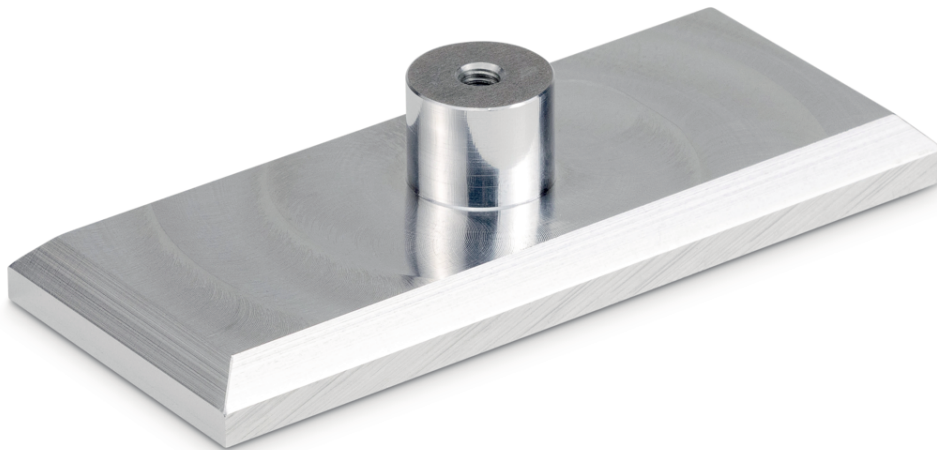


PRODUCT BROCHURE

**MEASURING INSTRUMENTS
AC 46**

Date: 24.03.2026

ENGLISH

Flat square-shaped sensor for lateral power sensing of back, chest or arm up to 1 kN, inner thread: M6

CONTACT

KERN & SOHN GmbH
Ziegelei 1
72336 Balingen
Germany

Phone : +49 7433 9933-0
Fax : +49 7433 9933-149
Email : info@kern-sohn.com
Web : www.kern-sohn.com



Scan here for more
information

DESCRIPTION

- for lateral power sensing of backs, chest or arm
- Scope of delivery: 1 piece

SPECIFICATIONS

Article codes, product groups & Status information

Model article-code	AC 46
Model-Serie	AC
Assortment	Sauter
Product Type	Force measurement
Product group	Clamps & clamping tools
Product usage type	Accessories/DL
EAN code (Model)	404576 1308640
Customs tariff number	90278990

Technical data - Construction

Material	aluminium
Dimension housing (W×D×H)	120×50×28 mm

Technical data - Measuring system

Mounting threads	Threaded hole M6
------------------	------------------

Technical data - Environmental conditions

Maximum storage temperature	40 °C
Minimum storage temperature	-10 °C

Technical data - Packing & Shipping

Dimensions packaging (W×D×H)	120×50×28 mm
Gross weight	0.20 kg
Net weight	0.20 kg
Shipping method	Parcel service
UN number	No dangerous goods
Packaging component - by weight - plastics	10 g
Delivery time	1 d

FUNCTIONS

Standard



ACCESSORIES

Model	Description
<u>AFM 01</u>	Sleeve SAUTER AFM 01
<u>AFM 02</u>	Sleeve SAUTER AFM 02
<u>AFM 03</u>	Sleeve SAUTER AFM 03
<u>AFM 08</u>	Thread SAUTER AFM 08
<u>AFM 13</u>	Sleeve SAUTER AFM 13
<u>AFM 14</u>	Adapter KERN AFM 14
<u>AFM 20</u>	Thread SAUTER AFM 20
<u>AFM 22</u>	Adapter KERN AFM 22